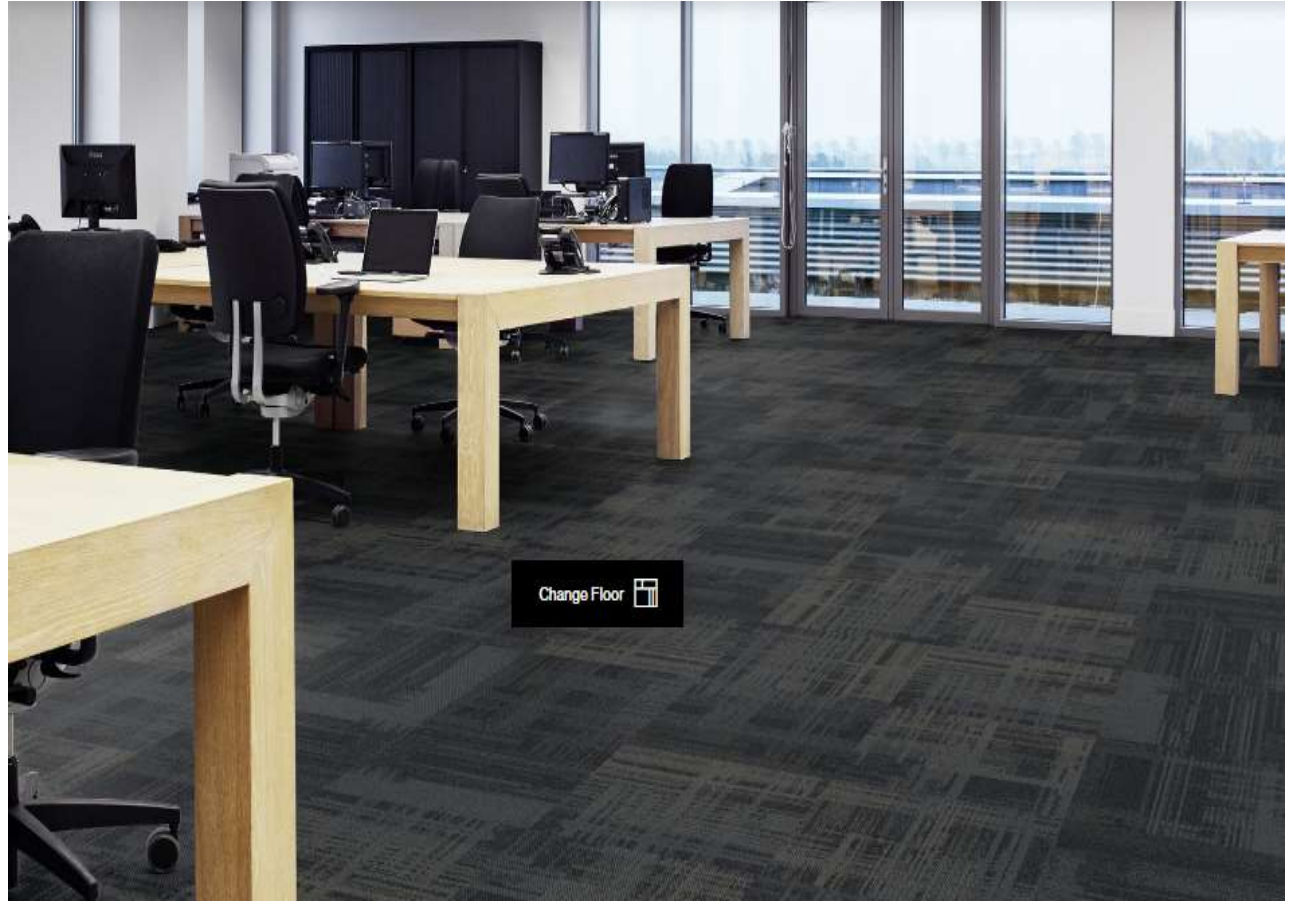
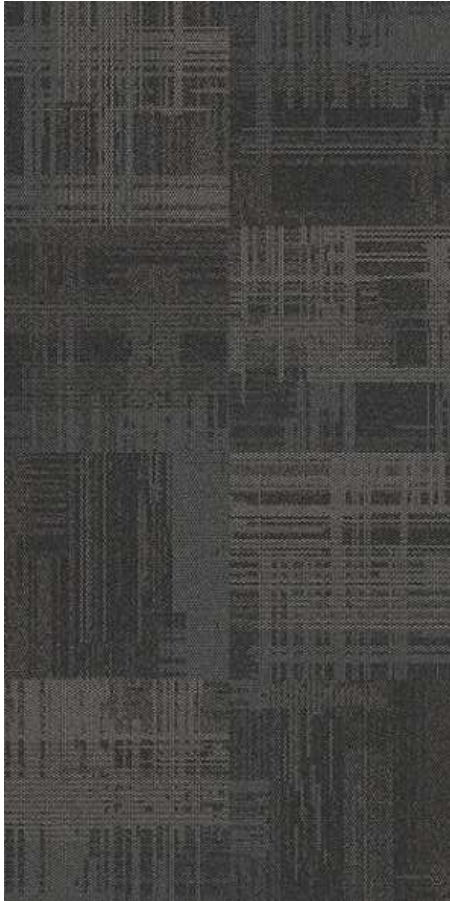


SERIES

- **AERIAL**
- **COLOUR ME**
- **ETCH**
- **OPEN AIR**
- **BIKE PATH**
- **NEIGHBORHOOD**
- **WORKS SERIES**
- **WORLD WOVEN**
- **SWING**

AERIAL AE310 : SMOKE





AERIAL AE 311: INK



updated - 2-Jun-26

STOCK (SQM) **175**

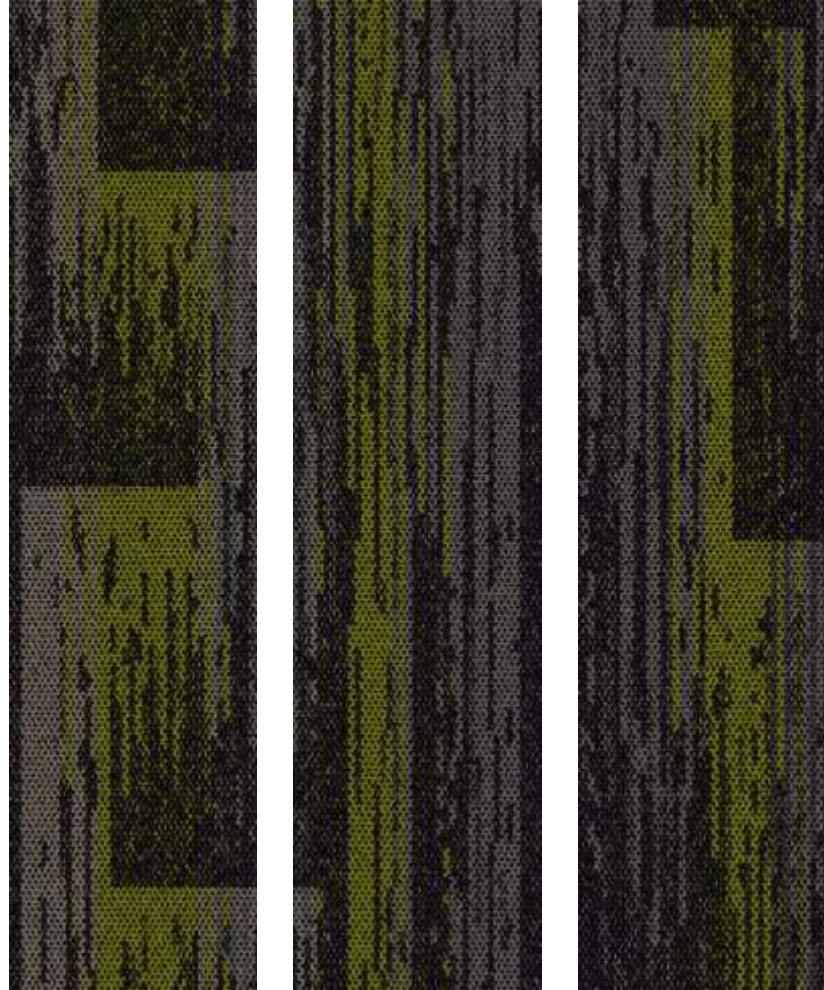
AERIAL AE 311 : TAUPE



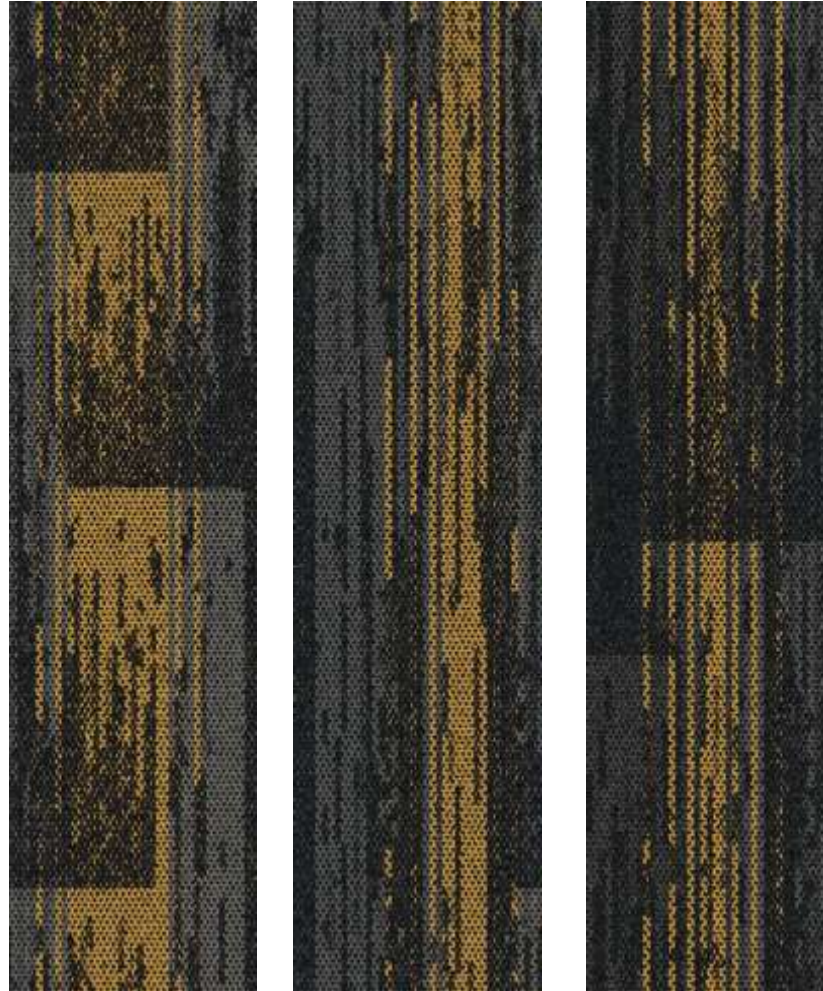
AERIAL AE 313 : FOG / Citrus



AERIAL AE313 : SMOKE GREEN (9518-002)



AERIAL AF313 : SMOKE YELLOW (9518-004)



MIST/PERSIMMON IRON/AZURE GREIGE/MAGEN SMOKE/AZURE GREIGE/AZURE



20



30



30



120



30

updated - 2-Jun-26

STOCK (SQM)

--

AERIAL AE315 : IRON / PERSIMMON (11456-003)

Design awaited from Stores

AERIAL: AE 315

FOG/GRASS



AE 317 : AQUAMARINE



updated - 2-Jun-26

STOCK (SQM) 20

AE 317 : AZURE



updated - 2-Jun-26

STOCK (SQM)

30

AE 317 : PERSIMMON



updated - 2-Jun-26

STOCK (SQM) **10**

BP 411 : Mint / Yellow



updated - 2-Jun-26

STOCK (SQM) 90

ETCH: FELDSPAR



updated - 2-Jun-26

STOCK (SQM)

230

OPEN AIR 401: GRANITE



OPEN AIR 402: CHARCOAL



updated - 2-Jun-26

STOCK (SQM)

20

OPEN AIR 402: LINEN / LINEN (CB)



updated - 2-Jun-26

STOCK (SQM) 15 / 0

OPEN AIR 403: ACCENT / TEAL



OPEN AIR 403: IRON



updated - 2-Jun-26

STOCK (SQM)

78

OPEN AIR 403: ACCENT FLANNEL /
CLEMENTINE 112269-1



OPEN AIR 403: ACCENT FLANNEL /
MAIZE 112270-1



OPEN AIR 404: ACCENT / CARIBBEAN



updated - 2-Jun-26

STOCK (SQM)

80

OPEN AIR 404: ACCENT / COBALT



updated - 2-Jun-26

STOCK (SQM) **35**

OPEN AIR 404: ACCENT / CLEMANTINE



OPEN AIR 404 : NICKEL / MOSS



updated - 2-Jun-26

STOCK (SQM) **15** /

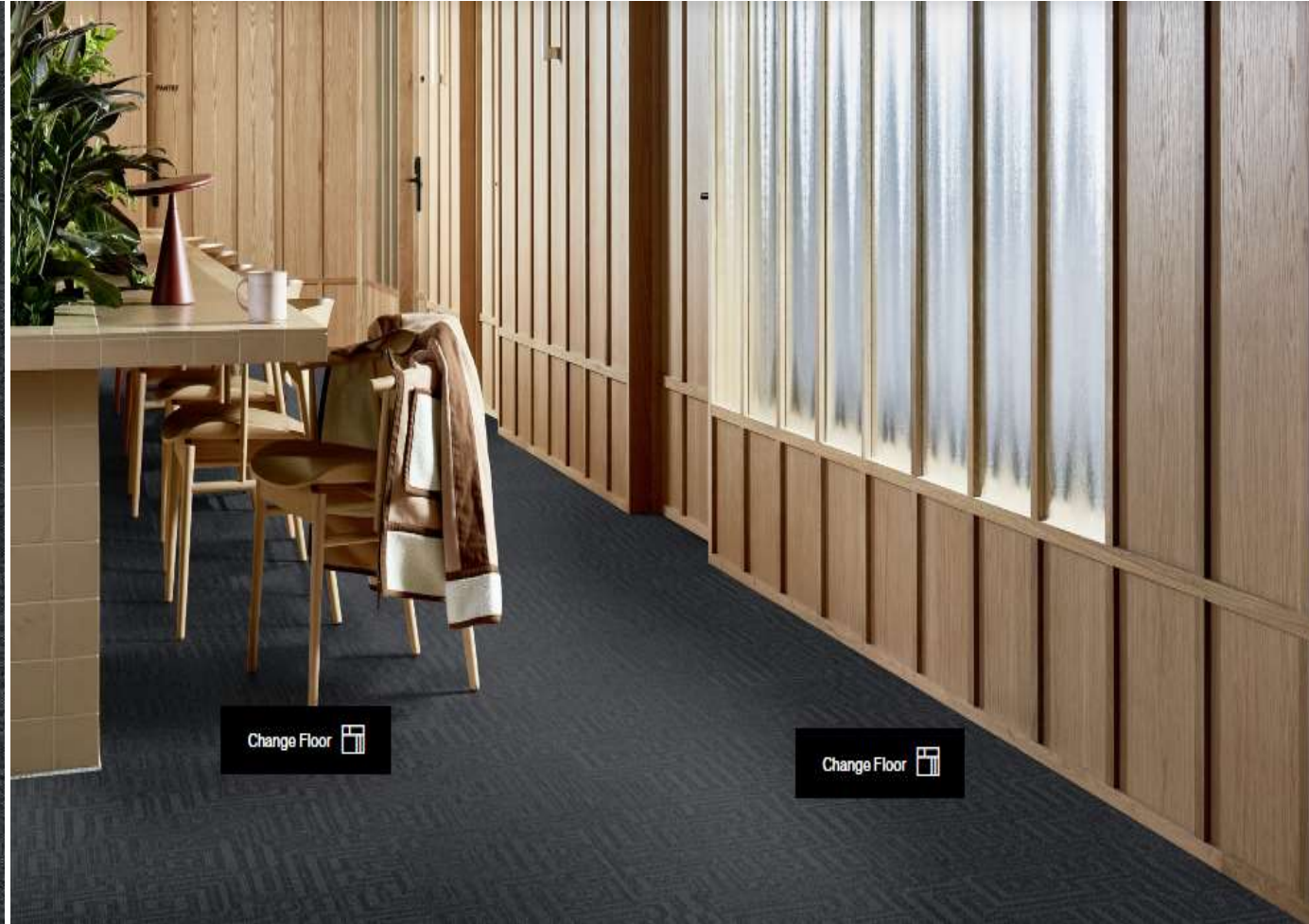
OPEN AIR 404 : NICKEL / (CB)



updated - 2-Jun-26

STOCK (SQM) **920** / **0**

OPEN AIR 413: IRON



updated - 2-Jun-26

STOCK (SQM) --

305

OPEN AIR 413: LINEN



updated - 2-Jun-26

STOCK (SQM) **139**

OPEN AIR 422: BLACK



updated - 2-Jun-26

STOCK (SQM)

19

NH BLOCKS: IRON



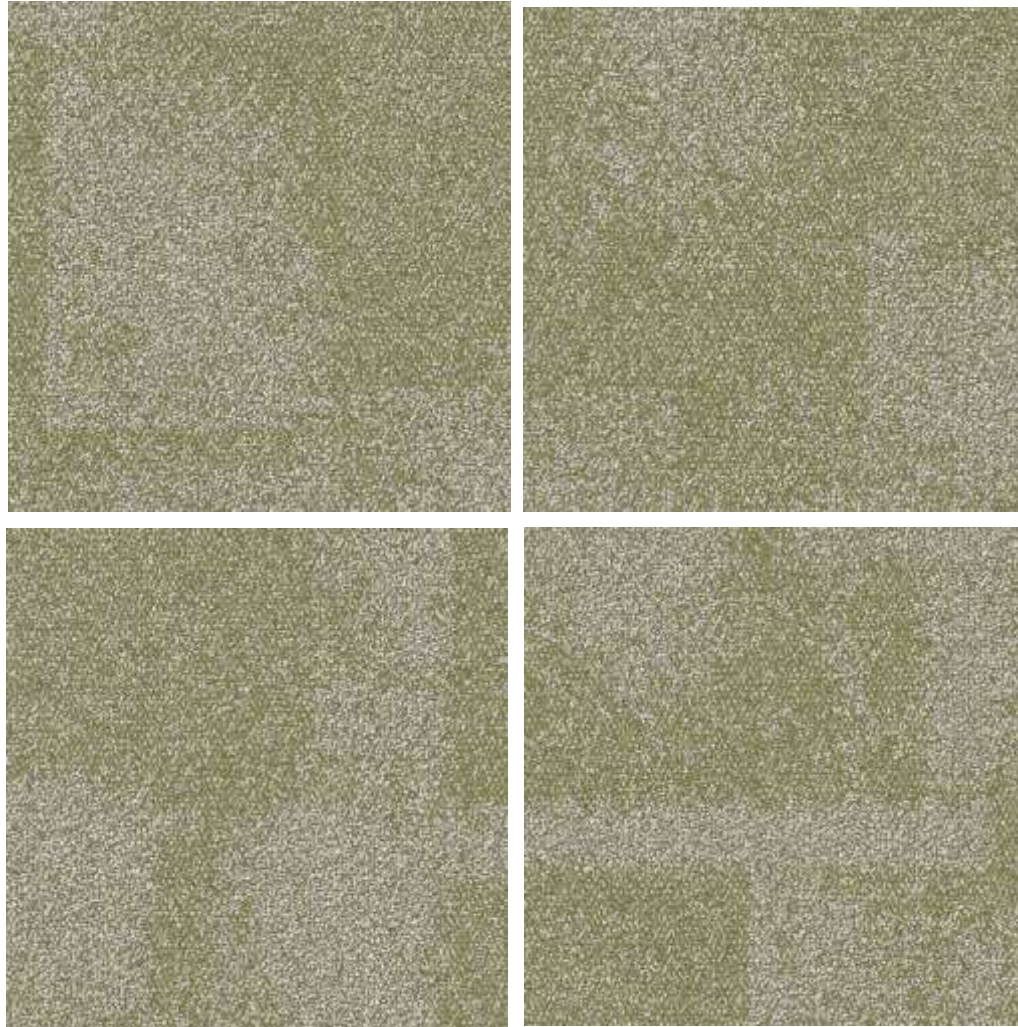
NH SMOOTH: PERSIMMON



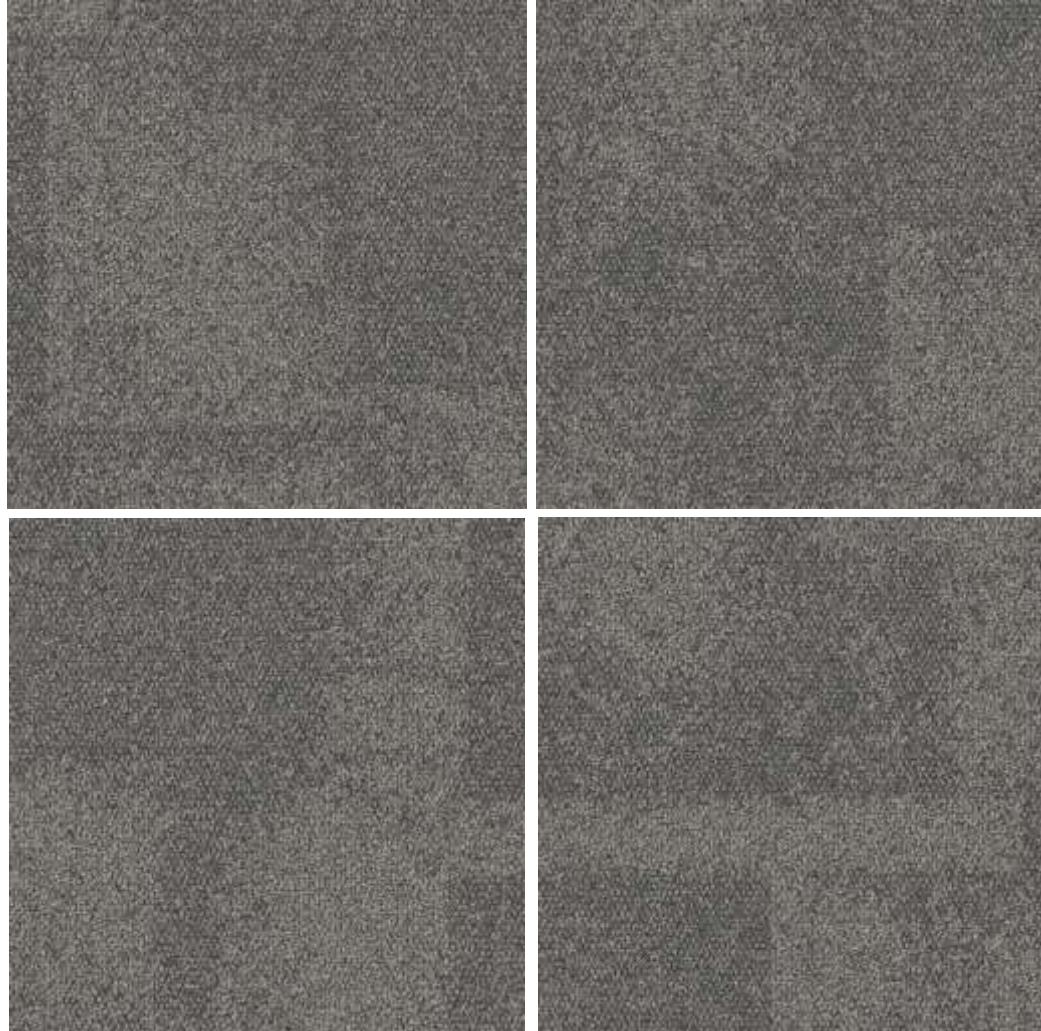
updated - 2-Jun-26

STOCK (SQM) **20**

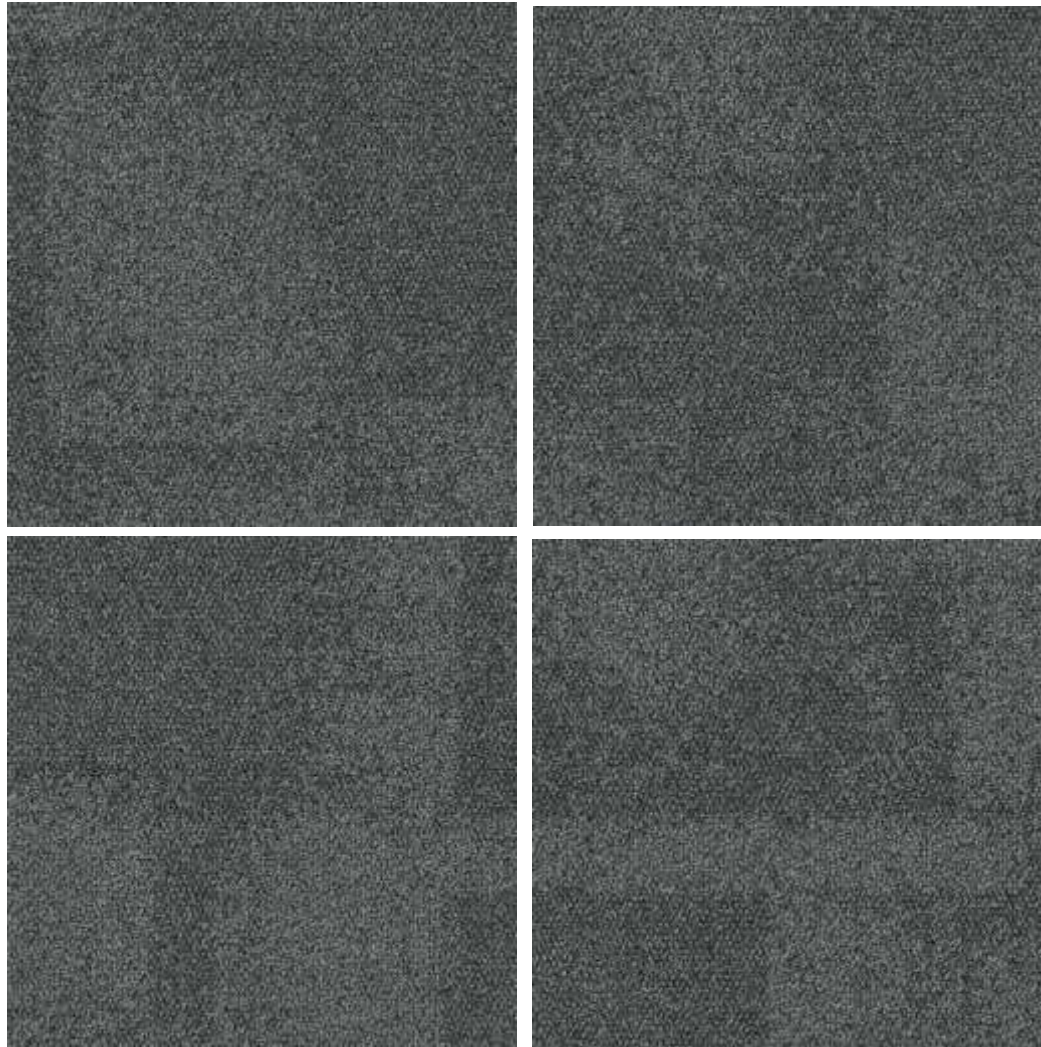
NH610 : OLIVE



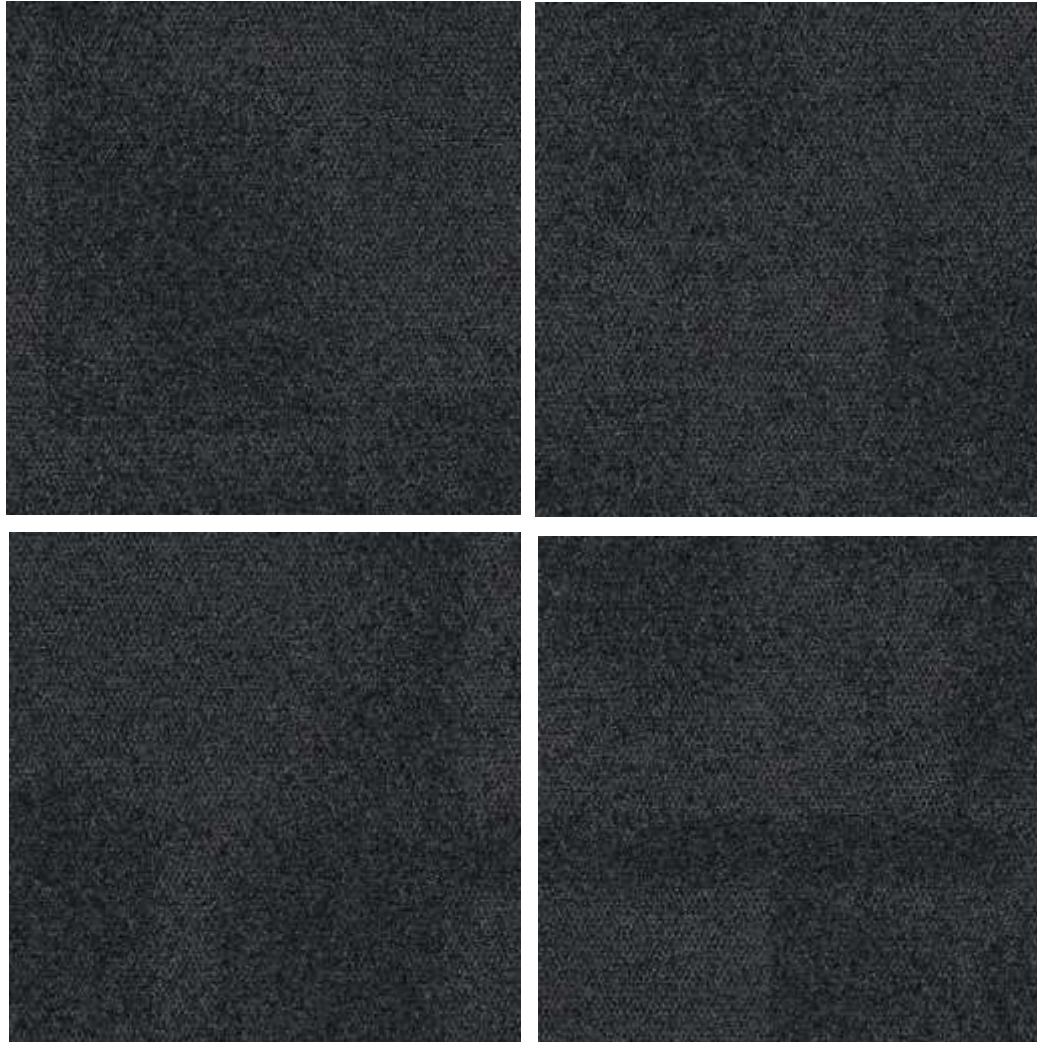
NH610 : SLATE



NH610 : BASALT



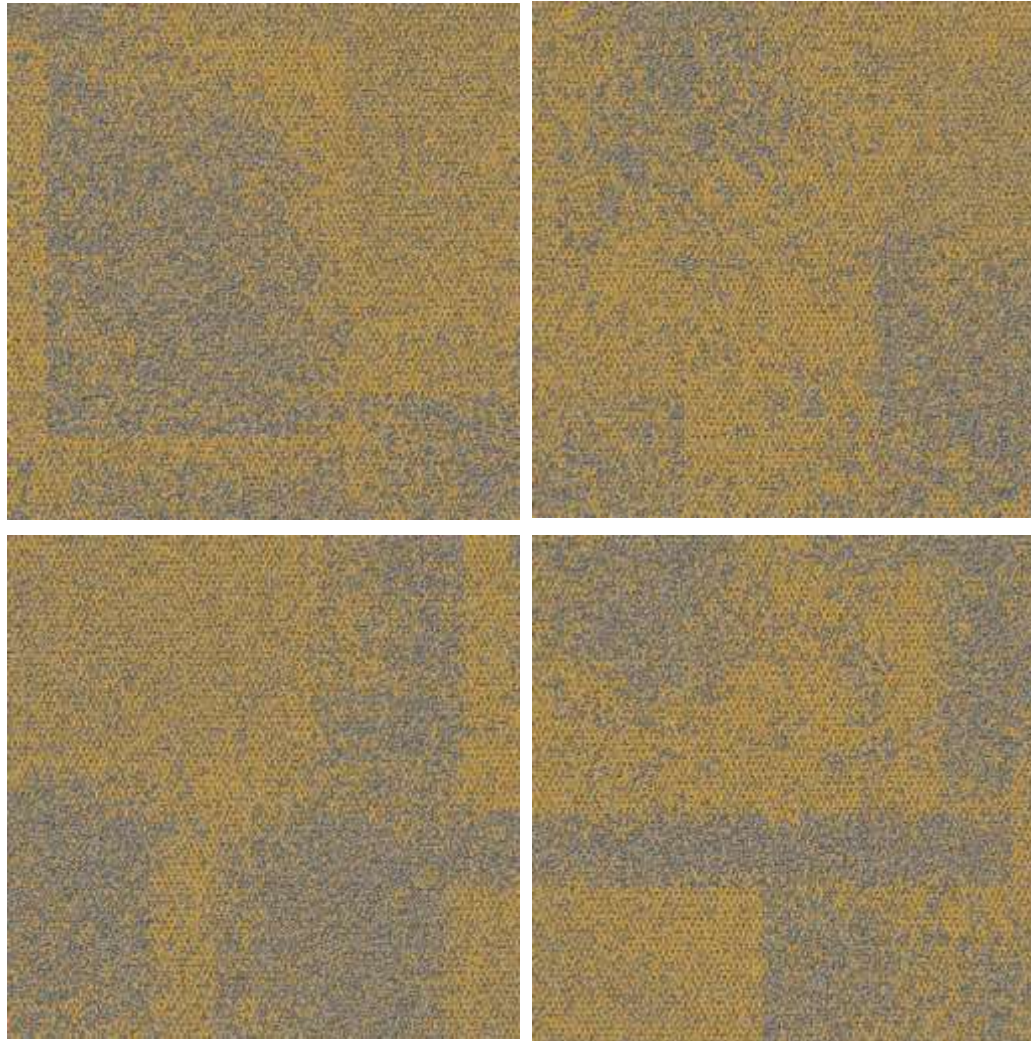
NH610 : CHARCOAL



updated - 2-Jun-26

STOCK (SQM) **1,115**

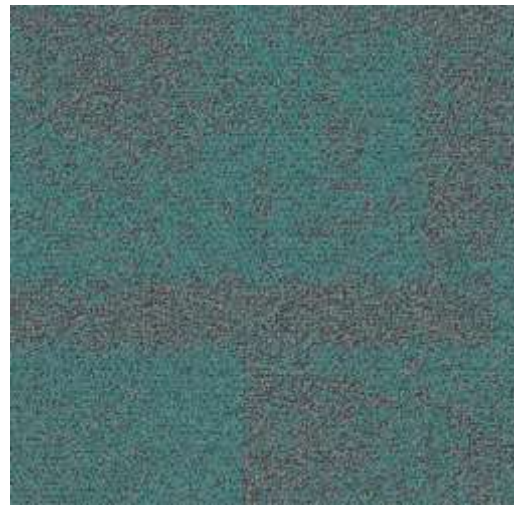
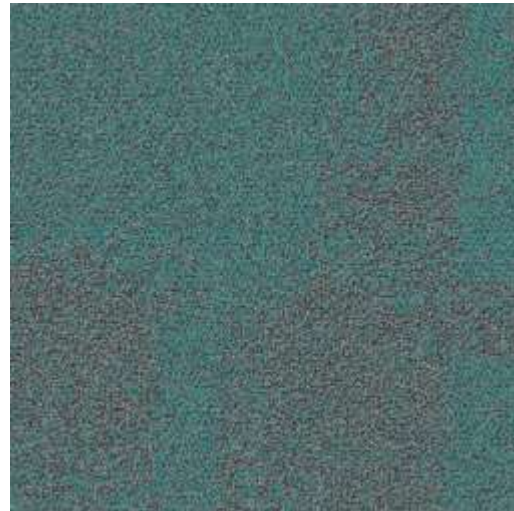
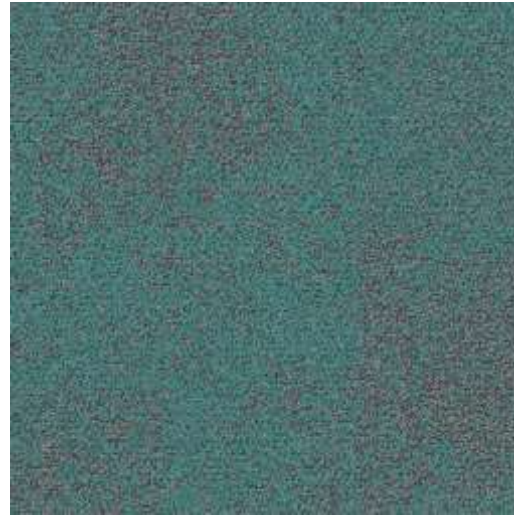
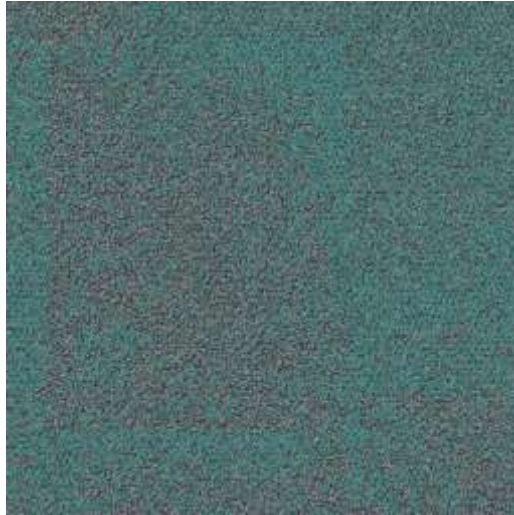
NH610 : MARIGOLD



NH610 : PEBBLE

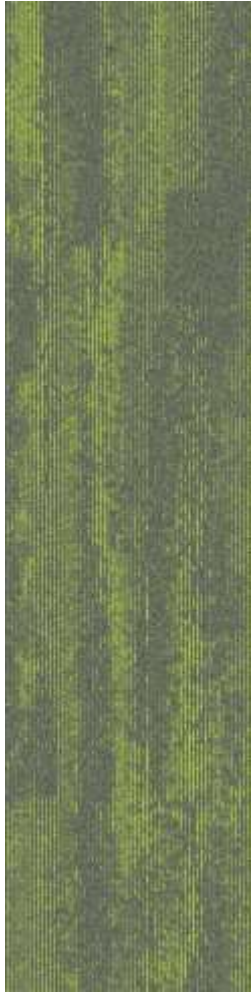
Design awaited from Stores

NH610 : SEABREEZE



WORKS

Eon :
Cinder Lime



20

Unite :
Basalt Orange



17

Unite :
Basalt Teal



50

Unite :
Mist Orange



20

WORKS FON : HAZE



updated - 2-Jun-26

STOCK (SQM) **105**

WORKS FON: FENNEL



updated - 2-Jun-26

STOCK (SQM) 40

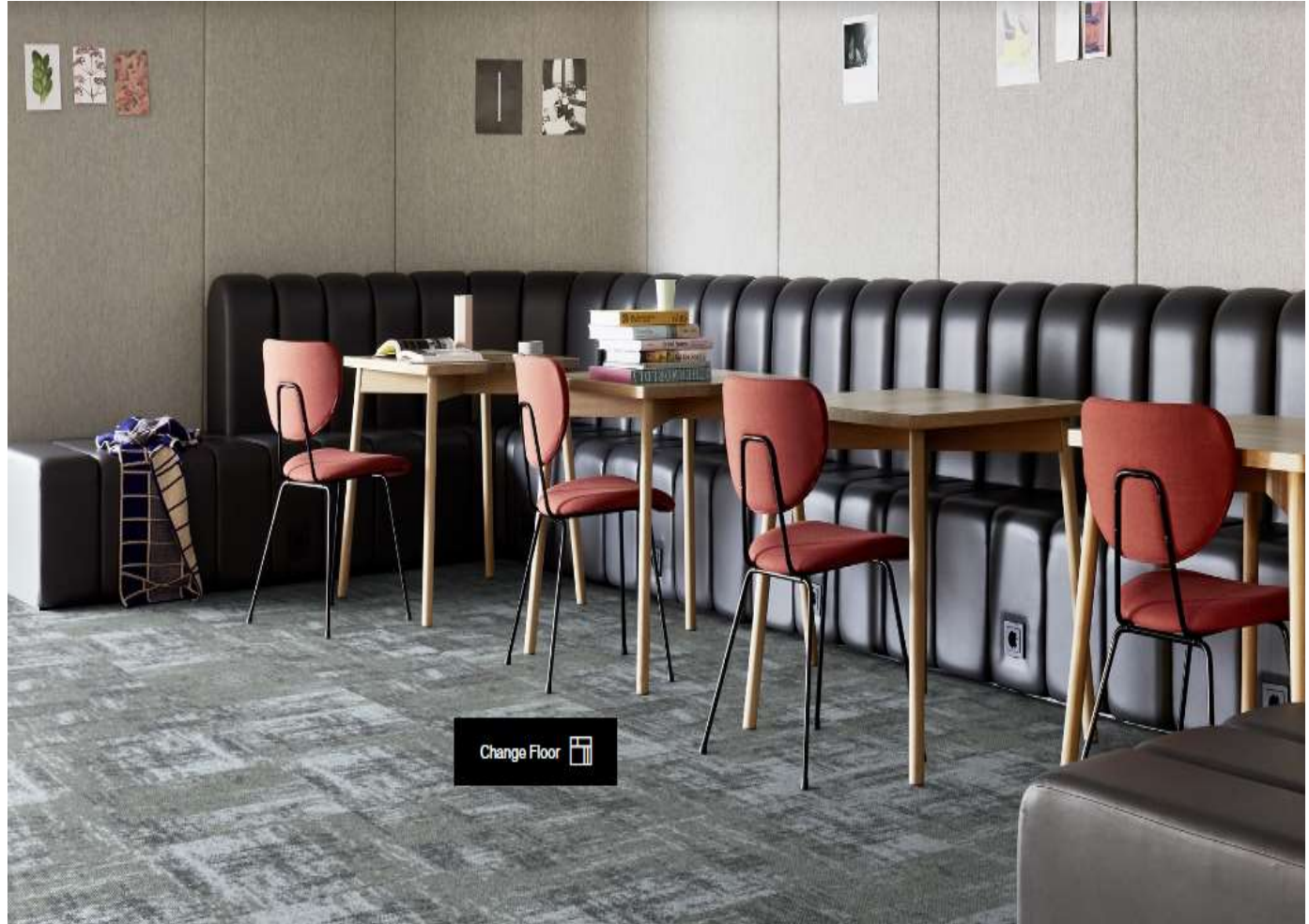
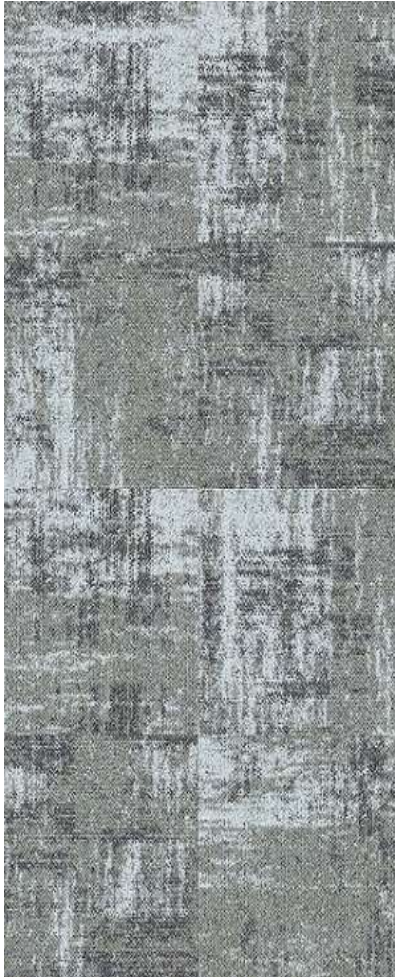
WORKS FON: TWILIGHT



WORKS + EFFECT: ADRIET



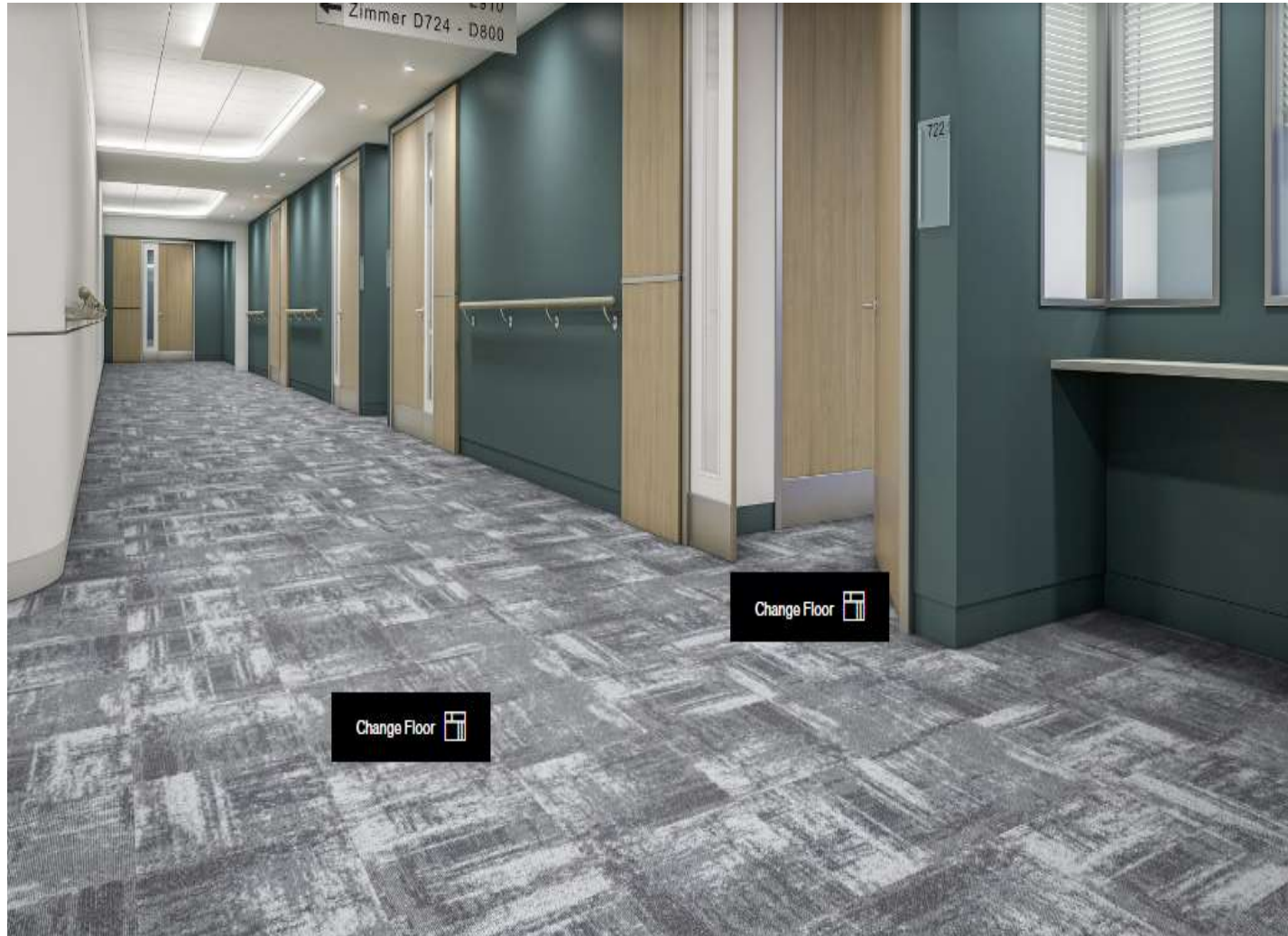
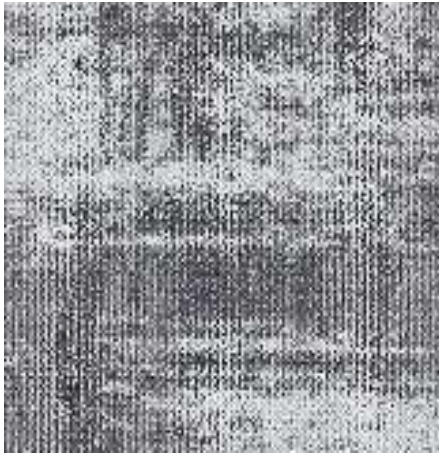
WORKS + EFFECT : CACTUS



updated - 2-Jun-26

STOCK (SQM) **55**

WORKS + EFFECT: HAZE



WORKS + SENSE: ADRIFT



updated - 2-Jun-26

STOCK (SQM)

205

WORKS + SENSE: CACTUS



updated - 2-Jun-26

STOCK (SQM)

55

WORKS + SENSE: CANYON



updated - 2-Jun-26

STOCK (SQM)

500

WORKS + SENSE: EBONY

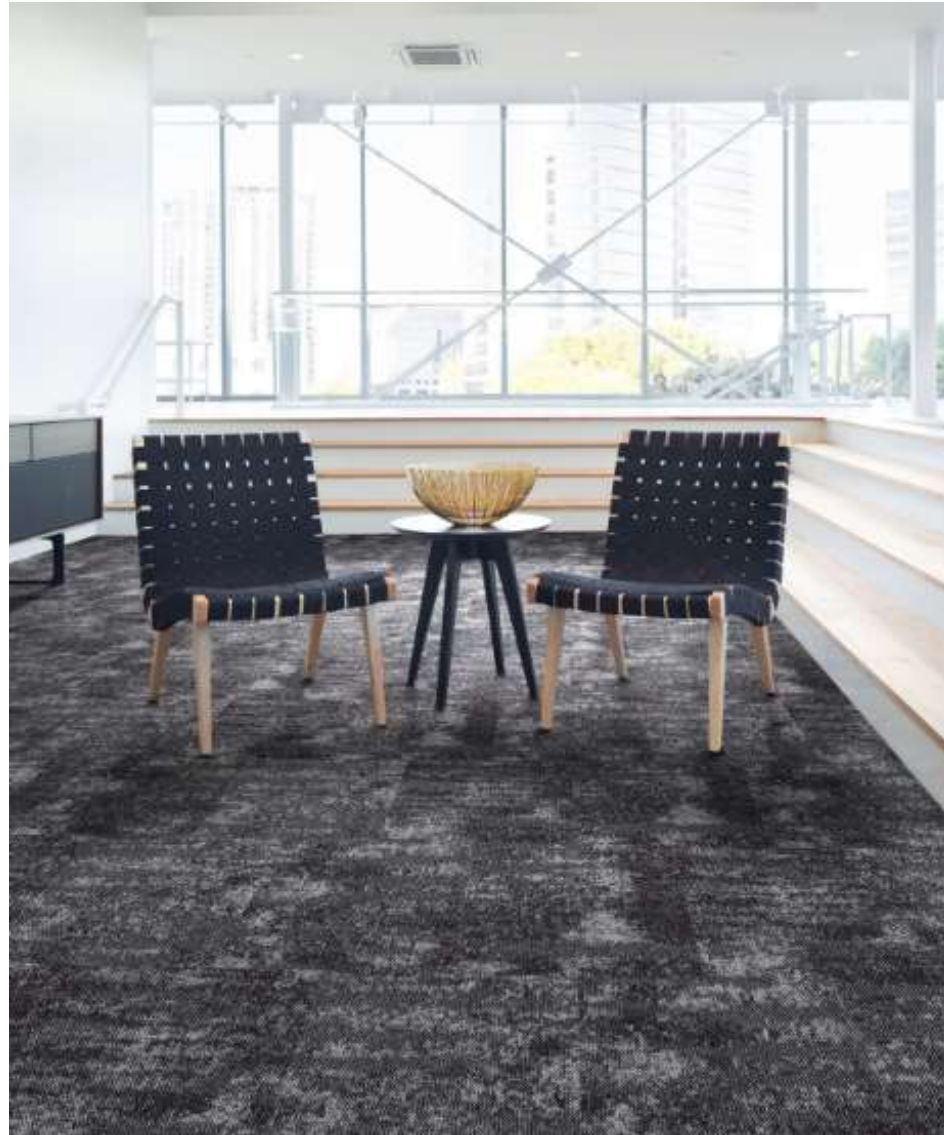


updated - 2-Jun-26

STOCK (SQM)

590

WORKS + SENSE: HAZE



updated - 2-Jun-26

STOCK (SQM)

1,090

WORKS + SENSE: HONEY



updated - 2-Jun-26

STOCK (SQM)

383

WORKS + SENSE: SHELL

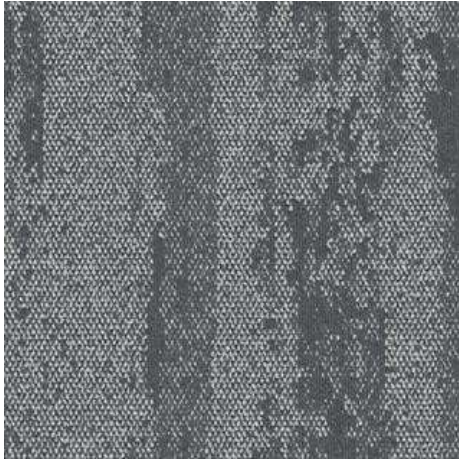


updated - 2-Jun-26

STOCK (SQM)

514

WORKS STREAM: GRANITE



updated - 2-Jun-26

STOCK (SQM)

295

WORKS UNITE: BASALT LIME



WORKS UNITE : MIST



updated - 2-Jun-26

STOCK (SQM)

510

WW 860: BLACK TWEED



WW 860 : SISAL TWEED



WW 865: HIGHLAND WRAP



WW 880: CHARCOAL LOOM

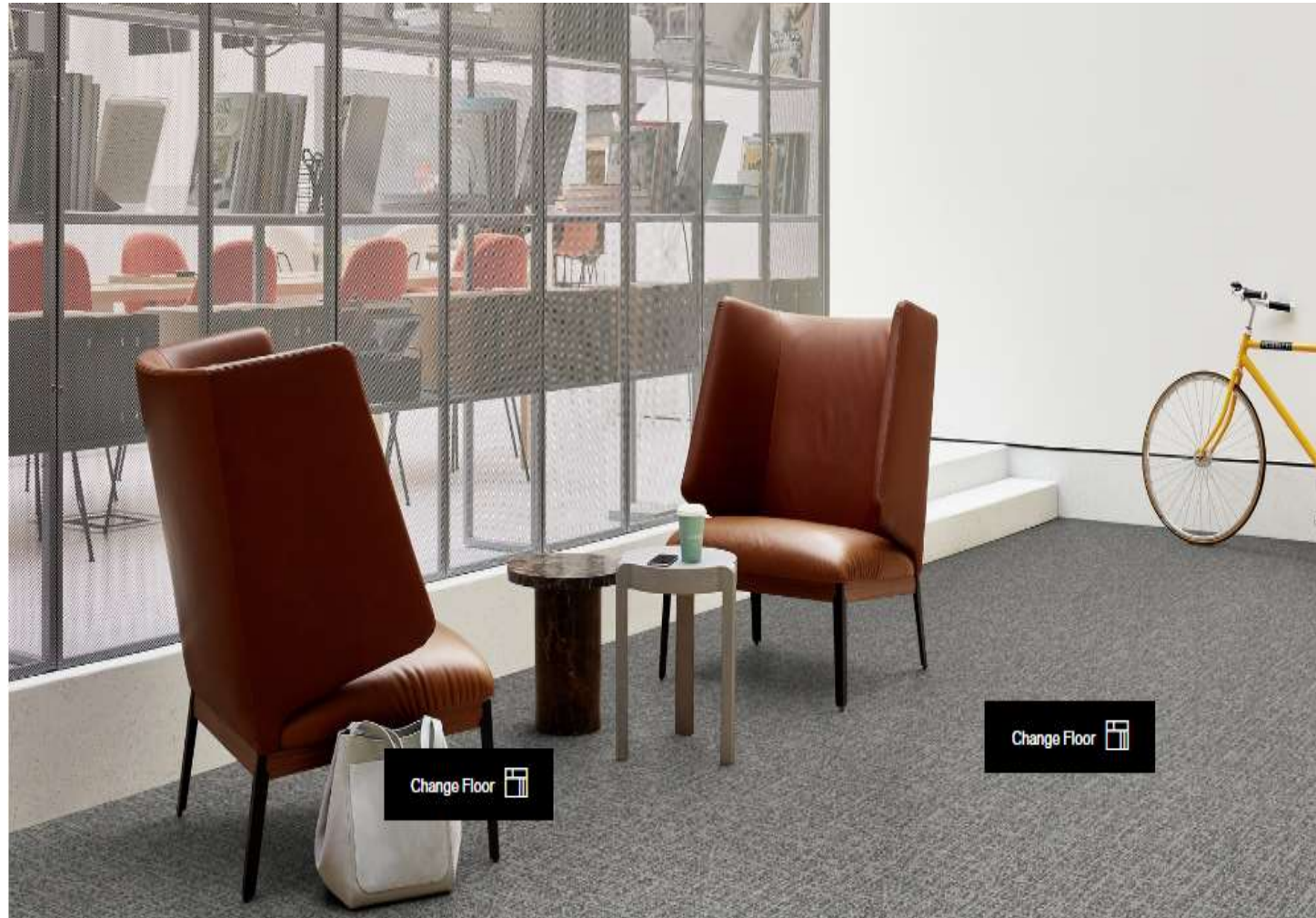


updated - 2-Jun-26

STOCK (SQM)

90

WW 890: LINEN DOBBY



updated - 2-Jun-26

STOCK (SQM) 30

WW 895: AUTUMN WEAVE



updated - 2-Jun-26

STOCK (SQM)

20

WW 895: HIGHLAND WEAVE



updated - 2-Jun-26

STOCK (SQM)

30